

The Role of Innate Immune Cells in Nonalcoholic Fatty Liver Disease

Marina Nati^{a, b, c} Kyoung-Jin Chung^a Triantafyllos Chavakis^{a, b, c}

^aInstitute for Clinical Chemistry and Laboratory Medicine, University Hospital and Faculty of Medicine Carl Gustav Carus, TU Dresden, Dresden, Germany; ^bPaul Langerhans Institute Dresden of Helmholtz Center Munich at the University Hospital and Faculty of Medicine Carl Gustav Carus of TU Dresden, Dresden, Germany; ^cGerman Center for Diabetes Research (DZD), Neuherberg, Germany

Keywords

Inflammation · Macrophages · Neutrophils · Non-alcoholic fatty liver disease

Abstract

Nonalcoholic fatty liver disease (NAFLD) is a very common hepatic pathology featuring steatosis and is linked to obesity and related conditions, such as the metabolic syndrome. When hepatic steatosis is accompanied by inflammation, the disorder is defined as nonalcoholic steatohepatitis (NASH), which in turn can progress toward fibrosis development that can ultimately result in cirrhosis. Cells of innate immunity, such as neutrophils or macrophages, are central regulators of NASH-related inflammation. Recent studies utilizing new experimental technologies, such as single-cell RNA sequencing, have revealed substantial heterogeneity within the macrophage populations of the liver, suggesting distinct functions of liver-resident Kupffer cells and recruited monocyte-derived macrophages with regards to regulation of liver inflammation and progression of NASH pathogenesis. Herein, we discuss recent developments concerning the function of innate immune cell subsets in NAFLD and NASH.

© 2021 The Author(s)
Published by S. Karger AG, Basel

Introduction: NAFLD and NASH

Nonalcoholic fatty liver disease (NAFLD) is the most frequent chronic liver pathology in developed countries [1]. The prevalence of NAFLD is approximately 25%; however, this prevalence is likely underestimated due to the absence of symptoms and lack of noninvasive diagnostic tools [2]. NAFLD affects up to 70% of type 2 diabetes patients [3, 4] and is present in the majority of obese individuals subjected to weight loss surgery [5, 6]. Therefore, NAFLD can be contemplated as the liver component of the metabolic syndrome [7]. Given that obesity, metabolic syndrome, and diabetes have reached a pandemic state, and that nonalcoholic steatohepatitis (NASH) is an increasing etiology for liver transplantation, it can be easily reasoned and forecasted that the prevalence of NAFLD will further increase [8, 9].

NAFLD is hallmarked by hepatic steatosis without excessive alcohol intake and in the absence of other potential causes of fat accumulation in the liver, such as infections (specifically viral hepatitis), medication-related steatosis, or hepatic autoimmune pathologies [10]. In approximately 20–30% of NAFLD patients, the disease progresses from simple steatosis to NASH [11]. NASH is characterized by necro-inflammation and ballooning of

hepatocytes; NASH may progress in a subset of patients toward development of fibrosis that can further lead to cirrhosis and liver failure, as well as hepatocellular carcinoma [12–14]. NAFLD may predispose to hepatocellular carcinoma even in the absence of cirrhosis and is a continuously increasing cause for liver transplantation [2, 8, 15–17]; in the United States, it is projected that NAFLD will likely become the main indication for liver transplantation in the near future [18]. The extent and significance of NAFLD as a health burden become even more obvious when considering the absence of approved treatments despite multiple ongoing clinical trials [19, 20].

During NASH, associated with obesity-related metabolic dysregulation, the expanded adipose tissue displays chronic low-grade inflammation and is a source for adipokines, such as leptin, and inflammatory cytokines, such as TNF or IL-6 [21]. Additionally, the obese adipose tissue releases free fatty acids (FFAs) into the circulation, which promotes ectopic fat deposition in the liver [21]. Fat accumulation in hepatocytes results in lipotoxicity, mitochondrial dysfunction, reactive oxygen species (ROS) generation, and endoplasmic reticulum stress [22]. In addition, NASH is associated with gut microbiota dysbiosis, and a dysfunctional gut barrier with enhanced permeability, resulting in the secretion of pro-inflammatory factors in the portal circulation that contribute to hepatic inflammation [23]. Pro-inflammatory cytokines, lipotoxicity, and gut-derived bacterial products promote activation of liver-resident macrophages, designated Kupffer cells (KCs), and recruitment of inflammatory macrophages [24]. Activation of innate immunity drives further hepatic infiltration and accumulation of inflammatory cells, thereby exacerbating liver inflammation and damage [25]. This inflammation-related pathological cascade leads to hepatic stellate cell (HSC) activation and their fibrogenic differentiation, culminating in liver fibrosis. Importantly, activated HSCs may further aggravate inflammation, thereby facilitating a vicious circle of inflammation and fibrosis, which can promote progression to cirrhosis [26].

In summary, understanding the molecular mechanisms triggering inflammation during NASH development and progression is a major research aim and focus of extensive investigations [25, 27–30]. Given the central role of innate immunity in NAFLD pathogenesis, the present article focuses on the role of neutrophils, macrophages, and KCs in the context of NAFLD and NASH development and progression.

The Role of Neutrophils in NAFLD

Being the most abundant leukocytes in human blood and the first responders to pathogen invasions, acute inflammation, or injury, neutrophils are principal players of the innate immune response [31–33]. Despite their extensively studied contribution in the context of acute sterile injury of the liver [34–37], less is known about their involvement in the metabolically induced chronic scenario of NAFLD.

In NAFLD patients, neutrophils are present in the portal inflammatory infiltrate and represent a source of pro-inflammatory IL-17 in progressed NASH; additionally, their number increases with NASH-related liver fibrosis [38]. Moreover, neutrophil abundance correlates with the degree of steatosis and neutrophils are often associated with steatotic hepatocytes in human NASH [39]. An elevation of the neutrophil-to-lymphocyte ratio in peripheral blood of human NAFLD patients has been suggested as a noninvasive marker for NASH and liver fibrosis severity [40]. In an attempt to clarify if neutrophil recruitment is a mere indication of the extent of liver damage or if it causally contributes to hepatocyte cytotoxicity and necro-inflammation, neutrophils were depleted, by using an antibody against Ly6G, in different murine models of NAFLD. Neutropenic mice were protected from both high-fat diet (HFD)-induced and methionine-choline-deficient (MCD) diet-induced steatohepatitis [41, 42]. The MCD diet induces steatosis, steatohepatitis, and fibrosis already after a few weeks [43]. On the other hand, the work of Calvente and colleagues [44] highlighted that neutrophils are also critical for the resolution of liver inflammation in a mouse NASH model based on MCD diet.

Several publications have underlined the potential role of neutrophil-derived factors in NAFLD progression. To immobilize and neutralize extracellular microbes, neutrophils release neutrophil extracellular traps (NETs), web-like structures comprising decondensed chromatin, nuclear, and granule proteins, in a process of self-induced death called NETosis [45]. Recently, a role of NETs in NAFLD progression was proposed. Elevated levels of myeloperoxidase (MPO)-DNA complexes, a NET biomarker, were found in the serum of NASH patients; additionally, neutrophil infiltration and NETosis were shown to promote NAFLD progression to hepatocellular carcinoma in mice [46]. Disrupting NET formation via deoxyribonuclease treatment or using peptidyl arginine deaminase type IV-deficient mice inhibited NASH-related cancer development [46]. Furthermore, the importance of NETs in promoting inflammation during early stages of

murine NASH was confirmed by Zhao and colleagues [47] using deoxyribonuclease administration in a model in which mice were fed a methionine-choline-deficient and a high-fat diet. These authors also showed that NETosis is activated in mouse fatty livers via S1P receptor 2 signaling [47].

Neutrophil activation and NETosis result in the release of granule proteins, key activators of the innate immune response [48]. Among others, neutrophil elastase (NE) participates in the generation of NETs, cathelicidins interact with and modulate toll-like receptor (TLR) activation, bactericidal/permeability-increasing protein exerts antimicrobial activity, whereas MPO stored in azurophilic granules, is a lysosomal enzyme with bactericidal activity that promotes ROS generation [49–52]. There is a consistent body of literature investigating the role of MPO in NAFLD. MPO levels are elevated in the circulation and in livers of NASH subjects compared to patients with simple steatosis and correlates with severity of liver inflammation [39]. Circulating neutrophils isolated from NASH patients are more prone to generate ROS than neutrophils from healthy subjects [53]. Whether the enhanced preparedness for ROS generation of neutrophils from NASH patients indicates the involvement of trained innate immunity, a form of innate immune memory, which can lead to increased inflammatory responses of innate immune cells, including neutrophils [54–56], in NASH pathogenesis remains to be elucidated. In a similar context, intracellular ROS generation may also promote migration and activation of human HSCs/myofibroblasts, thereby contributing to liver damage and fibrosis [57]. Importantly, MPO-triggered oxidative stress may result in increased DNA damage and accumulation of genomic mutations that increase the risk of malignant transformation and hepatocellular carcinoma development in NAFLD patients [58]. MPO may also participate in a neutrophil-HSC cross talk in NASH. Specifically, hepatic MPO is increased in NAFLD livers and MPO inactivation protects mice from NASH development, HSC activation, and fibrogenesis; in turn activated HSC-derived GM-CSF and IL-15 may enhance neutrophil survival, and thereby contribute to a feed-forward loop connecting perpetuation of liver inflammation and fibrosis [59–61].

The release of neutrophil granule contents into the liver extracellular matrix has been studied extensively in the context of hepatic injury and NASH pathogenesis [48]. Human neutrophil peptides (HNPs) also known as α -defensins, are a major microbicidal component of neutrophils. Treating human HSCs with HNP-1 *in vitro* increases their proliferation. Consistently, transgenic over-

expression of HNP-1 promotes HSC proliferation and liver fibrosis in mouse NASH triggered by feeding with a choline-deficient, L-amino acid-defined diet [62]; the choline-deficient, L-amino acid-defined diet is a frequently used diet that induces steatohepatitis and fibrosis [43]. Circulating levels of NE, proteinase 3, and lipocalin 2 (LCN2) are increased in patients with NASH [63–66]. Consistently, a treatment with sivelestat, an NE inhibitor, ameliorated inflammation, and liver damage during NASH in APOE^{-/-} mice fed with high-fat, high-cholesterol diet [42]. Moreover, NE secretion has been linked to insulin resistance. Treatment of primary mouse and human hepatocytes with NE directly degrades insulin receptor substrate-1, thereby increasing insulin resistance [67]. Pharmacological and genetic inactivation of NE mitigates liver insulin resistance and hepatic steatosis in obese mice [67, 68]. Additionally, NE and proteinase 3 may also promote HFD-triggered NAFLD pathogenesis, via their propensity to enzymatically activate IL-1 β [69, 70]. Ye et al. [65] showed that neutrophil-derived LCN2 is increased in circulation and liver of mice subjected to 2 diet-induced NASH models, the MCD and the high-fat, high-cholesterol dietary models. LCN2 promotes the expression of the CXCR2 chemokine receptor and drives macrophage accumulation in the liver via a neutrophil-dependent mechanism. Consequently, deficiency of LCN2 protects mice from NASH development while chronic infusion of recombinant LCN2 enhances inflammation and liver damage [65]. Taken together, NETosis and the release of neutrophil-derived granule proteins resulting upon neutrophil activation may participate in the development of NASH and hepatic fibrosis and could be considered as a potential pharmacological target in future preclinical and clinical studies.

The Role of KCs and Monocyte-Derived Macrophages in NAFLD

KCs, the liver-resident macrophages, are yolk sac-derived, self-renewing macrophages located inside the hepatic sinusoids, in close proximity with endothelial cells [71–75]. C-Type Lectin Domain Family 4 Member F (CLEC4F) has been identified as a KC-specific marker [76, 77]; additionally, T-cell immunoglobulin and mucin domain containing 4 (TIM4, a receptor mediating efferocytosis of apoptotic cells [78], is also a marker of KCs [77, 79, 80]. Several studies suggest a critical regulatory participation of KCs in human NASH. Increased numbers of KCs/macrophages have been observed in liver biopsies of

NASH patients, positively correlating with NAFLD disease severity; moreover, KCs and macrophages may form hepatic “crown-like structures” in NASH; crown-like structures represent macrophage aggregates surrounding steatotic hepatocytes that usually contain large lipid droplets [81, 82]. Enhanced numbers of portal macrophages are found at the early stages of human NASH, preceding subsequent inflammatory events [38]. In addition to KCs that are F4/80^{hi} and CD11b^{int}, recruited CD11b^{high} monocyte-derived macrophages (MoMFs) have also been implicated in NAFLD and NASH development and progression [24, 83]. In a series of studies in rodents subjected to different diet-induced NASH models, global depletion of KCs and macrophages via clodronate liposomes or gadolinium chloride protected against the development of steatosis, necro-inflammation, and fibrosis, hence suggesting that liver KCs/macrophages are a component of NASH pathogenesis [84–91].

The mechanisms underlying the role of KCs and macrophages in NASH are multifaceted. Hepatic macrophages/KCs may be activated by FFAs originating from the obese adipose tissue, in a manner that involves TLR signaling; in this regard, palmitate and TLR2 may collaborate to induce KC/macrophage inflammasome activation, while palmitate interacts with the TLR4/MD2-complex stimulating ROS generation in inflammatory macrophages [21, 92–94]. Additionally, trans-fatty acids and peroxidized lipids derived from an unbalanced diet can promote activation of KCs [95, 96]. In experimental models leading to NAFLD/NASH, including genetic deficiency of leptin in ob/ob mice or feeding a HFD followed by carbon tetrachloride administration to induce steatohepatitis, the adipocytokine leptin, deriving from the obese adipose tissue, stimulates KC production of pro-inflammatory and pro-fibrogenic cytokines [97–99]. At the same time, the decreased levels of adiponectin in obesity promote steatohepatitis in mice, as adiponectin exerts anti-inflammatory actions on KCs [100, 101].

NASH is also associated with altered gut microbiota composition and related elevated intestinal barrier permeability; in this context, bacteria or their products, such as endotoxin, may reach the liver via the portal circulation and contribute to KC/macrophage activation [102]. Bacterial lipopolysaccharide (LPS) and bacterial DNA interact with TLR4 and TLR9, respectively, thereby promoting pro-inflammatory and pro-fibrotic activity in KCs/macrophages in rodent NASH models; consistently, in humans with NAFLD, TLR4 expression correlated with portal inflammation and fibrosis [86, 103–106]. Once activated, KCs may contribute to steatosis develop-

ment by regulating hepatocyte lipid metabolism. Stienstra et al. [107] showed that KCs stimulate fat accumulation in hepatocytes by reducing their fatty acid oxidation via IL-1 β -dependent suppression of peroxisome proliferator-activated receptor α activity. Moreover, TNF is involved in mediating the KC-dependent impaired fatty acid oxidation and enhanced triglyceride accumulation, as shown in rat KC-hepatocyte co-cultures using antibodies blocking TNF [84].

During hepatic steatosis, excessive lipid metabolism in hepatocytes and increased oxidative stress further reinforce KC activation and inflammation development; a major lipotoxic molecule in the context of NASH is free cholesterol [108]. In both NASH patients and mouse models, KCs form crown-like structures, similar to those present in the inflamed adipose tissue [82, 109, 110]; such crown-like structures surround dying steatotic hepatocytes, which contain cholesterol crystals [111]. KCs engulf modified lipids, for instance, oxidized low-density lipoproteins, mainly via CD36 and scavenger receptor A, and become pro-inflammatory lipid-laden “foamy cells”; in this context, NLRP3 inflammasome stimulation by cholesterol crystals may represent a mechanism underlying KC activation [112–116]. Interestingly, cholesterol-loaded KCs are more prone to produce inflammatory cytokines and chemokines in response to LPS stimulation [117]. Whether this may reflect innate immune memory in KCs has not been addressed; however, oxidized low-density lipoproteins can induce innate immune memory in macrophages [118]. The combined effect of lipotoxicity and inflammation during steatohepatitis results in hepatocyte damage and necroptosis, which in turn further perpetuates KC/macrophage pro-inflammatory activation, hence, representing a possible feed-forward loop in NASH development [119].

Engulfment of hepatocyte-derived apoptotic bodies by KCs promotes the production of death ligands and TNF [120]. Dying hepatocytes release damage-associated molecular patterns (DAMPs) capable of enhancing inflammation by activating their respective pattern recognition receptors on KCs and by driving recruitment of inflammatory cells, such as monocytes and neutrophils [121]. Along this line, microparticles containing the DAMP mitochondrial DNA, deriving from steatotic hepatocytes, activate a pro-inflammatory response in KCs/macrophages in a TLR9-dependent manner, as shown in a mouse HFD model [122]. Another DAMP released from damaged hepatocytes is extracellular adenosine triphosphate [123]. In *in vitro* studies, adenosine triphosphate contributed to LPS-induced IL-6 secretion by mouse KCs

[123]. Thus, DAMPs derived from hepatocyte death may potentiate hepatic inflammation in NASH.

Activation of resident KCs/macrophages in the liver and increased production of pro-inflammatory factors promotes the recruitment and accumulation of nonresident inflammatory cells to the liver, such as B lymphocytes, T lymphocytes, neutrophils, and monocytes, the latter giving rise to macrophages [90, 91, 117, 120, 124]. Chemokines produced by activated KCs regulate the recruitment of inflammatory cells; among them, C-C motif ligand 2 (CCL2) plays a crucial role in NASH development. In diet-induced NASH models in mice, CCL2 interacting with its cognate receptor CCR2 facilitates the accumulation of Ly6C^{hi} monocytes in the liver [90, 91]. These infiltrating monocytes give rise to a distinct recruited hepatic macrophage population, MoMFs [124]. MoMFs originate from bone marrow hematopoietic cells and differ phenotypically from KCs [125]. Morinaga et al. [124] showed that the MoMFs infiltrating the steatotic liver of obese mice had higher expression of CCR2 but lower expression of CCL2 than KCs. Increased abundance of CCR2-expressing MoMFs was also identified in human NAFLD [126]. This infiltrating population is distinct from resident KCs and its abundance in the liver of patients correlates with severity of NASH and the stage of fibrosis [126]. In the recovery phase of carbon tetrachloride-induced fibrosis in mice, macrophages promote matrix degradation and repair [127]. Alternatively activated KCs/macrophages with an anti-inflammatory phenotype may promote apoptosis in M1-polarized pro-inflammatory KCs/macrophages, and thereby limit NAFLD-related liver injury in mice [128].

The mostly studied pro-inflammatory cytokines produced by liver KCs/macrophages during NASH are TNF [90, 129, 130] and IL-1 β , the latter deriving from caspase-1 activation [131]. Macrophage-derived TNF and IL-1 β may promote survival of activated HSCs in a manner that involves actions of the nuclear factor-kappaB, while TNF stimulates expression of tissue inhibitor of metalloproteinase 1 in HSCs as well, as shown in mouse models [132, 133]. Activated KCs/macrophages may also promote HSC transdifferentiation into collagen-secreting pro-fibrotic myofibroblast-like cells via TGF- β 1 secretion, thereby aggravating hepatic fibrosis [134–136]. Interestingly, activin-A, a member of the TGF- β family, stimulates expression of TNF and TGF- β 1 in mouse KCs thereby reinforcing the paracrine cross talk of KCs with HSCs [134]. Together, the interaction of KCs/macrophages with HSCs may promote NASH-related hepatic fibrosis contributing to progression of steatohepatitis toward liver cirrhosis.

Recent utilization of RNA sequencing and single-cell RNA sequencing techniques allowed a better investigation and understanding of the properties of distinct hepatic macrophage populations and resulted in functional diversification between KCs and MoMFs [137, 138]. Using a Western diet mouse model, Krenkel et al. [138] identified in NASH-livers expansion of MoMFs characterized by a unique inflammatory phenotype. Xiong et al. [139] identified a NASH-specific macrophage subset highly expressing triggering receptors expressed on myeloid cells 2 (TREM2). This population was designated as NASH-associated macrophages and is present both in human and mouse NASH [139]. Moreover, TREM2 also characterizes the lipid-associated macrophages (LAMs) of the adipose tissue in obesity [140]. A TREM2⁺CD9⁺ subpopulation of macrophages was also discovered in human NASH and named scar-associated macrophages due to their pro-fibrogenic phenotype [141]. Furthermore, recent studies demonstrated that KC numbers decrease in the NAFLD/NASH liver of mice and are replaced by recruited MoMFs of hematopoietic origin [142, 143]. In mice fed with a Western diet, high in fat, cholesterol, and sugar, liver-infiltrated MoMFs comprised 2 subpopulations, of which one is reminiscent of KCs and the other had LAM-like properties [143]. The latter population was characterized by osteopontin expression and was predominantly present in hepatic regions displaying fibrosis and low KC abundance [143]. Another study confirmed that TIM4-positive and CLEC4F-positive KCs are reduced, while abundance of infiltrated TIM4-negative MoMFs increases in the liver of mice upon NAFLD induction with a high-fat, high-sucrose-diet [79]. A subset within these recruited MoMFs expressed *Trem2* and other markers of LAMs, such as *Cd63*, *Cd9*, and *Gpmbn*; another transitional subpopulation expressed *Cx3cr1* and *Ccr2* and were designated C-LAMs. LAMs and C-LAMs were localized primarily in macrophage aggregates and crown-like structures of the NASH liver and might operate in a fashion that protects against NASH-related fibrosis [79]. A further recent mouse study identified a monocyte-derived KC population with decreased self-renewal and a pro-inflammatory phenotype that aggravates liver injury during NASH [144]. Despite the heterogeneity in markers and nomenclature, it can be stated that MoMFs play a significant role in NASH progression by promoting inflammation in a multitude of likely synergistically acting ways, including production of chemokines, cytokines, or ROS, although, as recently suggested, MoMF-derived LAMs may also protect against fibrosis [79, 141, 144–147].

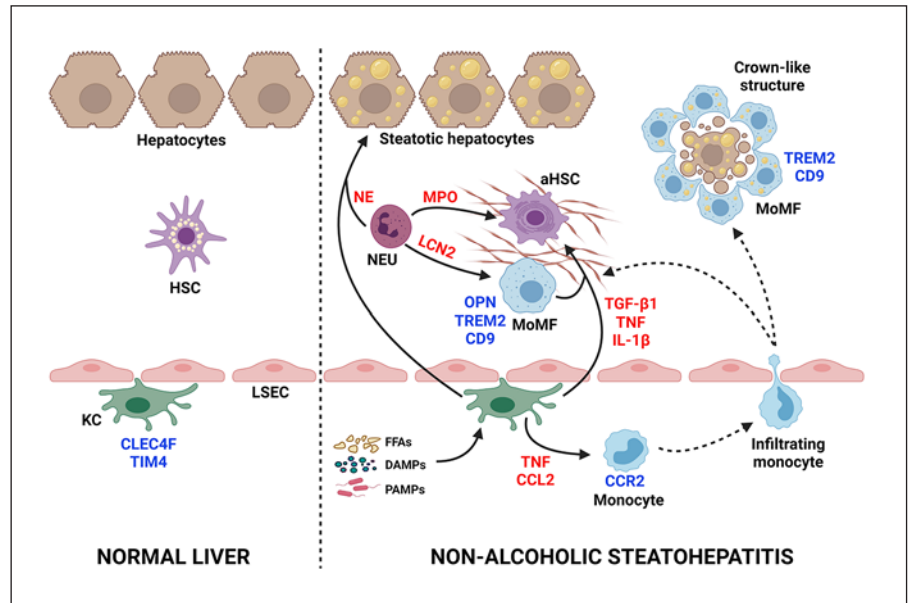


Fig. 1. Role of innate immune cells in NASH. KCs, characterized by TIM4 and CLEC4F expression, exert a homeostatic function in the healthy liver. However, during NASH development, KCs can be activated by circulating FFAs and cytokines deriving from the inflamed obese adipose tissue, dysbiotic microbiota-derived PAMPs, and DAMPs released from damaged hepatic cells. Activated KCs contribute to hepatic steatosis by modulating hepatocyte lipid metabolism. Moreover, activated KCs propagate the inflammatory response by secreting TNF and CCL2, thereby promoting CCR2-dependent recruitment of monocytes to the liver. Infiltrated monocytes can give rise to pro-inflammatory MoMFs contributing to NASH progression and fibrogenesis. A scar-associated TREM2⁺CD9⁺ subpopulation of MoMFs that may also produce osteopontin promotes HSC survival and activation. In this context, TNF, IL-1 β , and TGF- β 1 derived from activated KCs/macrophages contribute to HSC activation. In crown-like structures, surrounding dying hepatocytes, TREM2⁺CD9⁺ MoMFs may facilitate the clearance of dying steatotic hepatocytes and might

thereby also exert protective functions in NASH-related fibrosis. Neutrophils are also recruited to the liver and accumulate in the chronically inflamed tissue in NASH. NETosis and neutrophil activation, resulting in the release of granule proteins, such as NE, MPO, and LCN2, can promote hepatic steatosis, exacerbation of inflammation and fibrosis. For details and relevant references, see the Text. KC, Kupffer cell; HSC, hepatic stellate cell; aHSC, activated HSCs; LSEC, liver sinusoidal endothelial cells; MoMF, monocyte-derived macrophages; NEU, neutrophils; FFAs, free fatty acids; DAMPs, damage-associated molecular patterns; PAMPs, pathogen-associated molecular patterns; NE, neutrophil elastase; MPO, myeloperoxidase; LCN2, lipocalin 2; OPN, osteopontin; TREM2, triggering receptors expressed on myeloid cells 2; TGF- β 1, transforming growth factor-beta 1, TNF, tumor necrosis factor; IL-1 β , interleukin 1 beta; CCL2, chemokine (C-C motif) ligand 2; CCR2, C-C chemokine receptor type 2; CLEC4F, C-Type Lectin Domain Family 4 Member F; TIM4, T-cell immunoglobulin and mucin domain containing 4.

Additionally, under certain circumstances, cells of hematopoietic origin, specifically monocytes derived from the bone marrow, may contribute to the replenishment of the KC niche giving rise to self-renewing and fully differentiated KCs [77, 148]. Upon acute depletion of KCs in mice, recruited macrophages acquired KC identity in a manner requiring Notch, TGF- β and liver-X-receptor signaling [149]. Consistently, a parallel study demonstrated that early TNF- and IL-1-dependent inflammatory signaling following KC depletion in mice activated HSCs and the endothelium to upregulate adhesion receptors and chemokines, thereby triggering monocyte recruitment. Recruited monocytes, in turn, gave rise to new KCs associated with induction of liver-

X-receptor α expression, stimulated by interaction with HSCs and endothelial cells and involvement of NOTCH and bone morphogenetic protein (BMP) signaling [150].

Taking the aforementioned recent studies into account, it can be stated that bone marrow-derived MoMFs seemingly play an important pathogenic role in NASH, including promotion of inflammation and fibrosis; on the other hand, KCs may be more important in liver homeostasis [72, 125]. In fact, recent studies that identified markers distinguishing KCs and MoMFs also suggest that NASH-associated pathogenic functions that were previously ascribed to activated KCs may rather be mediated by recruited MoMFs. Additionally, in contrast to previ-

ously prevailing ideas that both KC and MoMF numbers increase during NASH, recent studies have changed our view by suggesting that enhanced MoMF infiltration may be accompanied by a reduction of KCs in different models of dietary NASH and that NASH is linked with a dysfunction of KC homeostasis [79, 144, 151]. In conclusion, due to their central role in regulating steatosis, inflammation, and fibrosis in NASH pathogenesis, macrophages may represent therapeutic targets for NASH development and progression.

Conclusions and Future Perspectives

Animal models and clinical studies have shown a critical role of cells of the innate immunity, particularly myeloid cells, such as neutrophils or MoMFs in initiation and propagation but also modulation and amelioration of hepatic inflammation in the context of NASH development, progression, and resolution [41, 42, 72, 79, 127, 141, 143] (Fig. 1). Therefore, myeloid cells and products thereof might represent potential therapeutic targets and noninvasive markers for assessing disease severity. However, due to their dual role in both contributing to and protecting against NASH pathogenesis, it is important to be able to target distinct myeloid cell subsets with pathological or pro-resolving properties specifically.

In recent years, advances in single-cell RNA sequencing allowed to explore the heterogeneity of MoMFs and KCs revealing the limitations and inadequacy of previously used markers. Novel markers and pathogenic players were identified in the context of NASH by characterizing distinct hepatic macrophage subpopulations on the basis of their transcriptional signatures [138, 139, 141]. Widely used traditional markers, such as CD68, F4/80 or CD11b, are clearly not sufficient to distinguish between resident and bone marrow-derived macrophages; novel markers, such as CLEC4F and TIM4, have been identified for KCs [77, 79, 80] or TREM2 and CD9 for inflammatory and pro-fibrotic MoMFs [141]. Due to these recent findings, researchers have shifted their focus from KCs to recruited MoMFs. Along this line, inhibiting the chemokine-dependent infiltration of monocytes seems like a promising therapeutic strategy. CCR2 and CCR5 are key players in the monocyte/macrophage and leukocyte trafficking, and cenicriviroc, a dual CCR2–CCR5 antagonist, ameliorated steatohepatitis, and fibrosis in different diet-induced mouse models of NASH [126]. Moreover, in a phase II b study, twice as many patients treated for 1 year with cenicriviroc presented fibrosis re-

duction when compared with the placebo group [152] and a phase III trial is in progress in NASH patients with stage F2 or F3 fibrosis [153]. Furthermore, Cenicriviroc is also tested in combination with Tropicifexor, an agonist of the bile acid receptor, farnesoid X activated receptor [154]. Future studies utilizing innovative methodologies, such as single-cell RNA sequencing, and focusing on specific cellular subsets will help elucidate the exact role of different innate immune cell subsets in the complex pathophysiology of NASH and will likely provide novel therapeutic targets.

Acknowledgments

The figure was created using Biorender.com.

Conflict of Interest Statement

The authors have no conflicts of interest to declare in relation to this work.

Funding Sources

T.C. is supported by funds from the European Research Council (ERC), the German Research Foundation (DFG), the National Institute of Dental and Craniofacial Research/National Institutes of Health (NIDCR/NIH), the German Ministry of Research and Education (BMBF), and the Else Kröner Fresenius Center for Digital Health Dresden.

Author Contributions

M.N. wrote the first draft; K.-J.C. and T.C. reviewed and edited the manuscript.

References

- 1 Rinella M, Charlton M. The globalization of nonalcoholic fatty liver disease: prevalence and impact on world health. *Hepatology*. 2016 Jul;64(1):19–22.
- 2 Younossi ZM, Koenig AB, Abdelatif D, Fazel Y, Henry L, Wymer M. Global epidemiology of nonalcoholic fatty liver disease—meta-analytic assessment of prevalence, incidence, and outcomes. *Hepatology*. 2016 Jul;64(1):73–84.
- 3 Targher G, Bertolini L, Padovani R, Rodella S, Tessari R, Zenari L, et al. Prevalence of nonalcoholic fatty liver disease and its association with cardiovascular disease among type 2 diabetic patients. *Diabetes Care*. 2007 May;30(5):1212–8.

- 4 Williamson RM, Price JF, Glancy S, Perry E, Nee LD, Hayes PC, et al. Prevalence of and risk factors for hepatic steatosis and nonalcoholic fatty liver disease in people with type 2 diabetes: the edinburgh type 2 diabetes study. *Diabetes Care*. 2011 May;34(5):1139–44.
- 5 Beymer C, Kowdley KV, Larson A, Edmonson P, Dellinger EP, Flum DR. Prevalence and predictors of asymptomatic liver disease in patients undergoing gastric bypass surgery. *Arch Surg*. 2003 Nov;138(11):1240–4.
- 6 Morita S, De Santi Neto D, Morita FH, Morita NK, Lobo SM. Prevalence of non-alcoholic fatty liver disease and steatohepatitis risk factors in patients undergoing bariatric surgery. *Obes Surg*. 2015 Dec;25(12):2335–43.
- 7 Boppidi H, Daram SR. Nonalcoholic fatty liver disease: hepatic manifestation of obesity and the metabolic syndrome. *Postgrad Med*. 2008 Jul;120(2):E01–7.
- 8 Wong RJ, Aguilar M, Cheung R, Perumpail RB, Harrison SA, Younossi ZM, et al. Nonalcoholic steatohepatitis is the second leading etiology of liver disease among adults awaiting liver transplantation in the United States. *Gastroenterology*. 2015 Mar;148(3):547–55.
- 9 Estes C, Razavi H, Loomba R, Younossi Z, Sanyal AJ. Modeling the epidemic of nonalcoholic fatty liver disease demonstrates an exponential increase in burden of disease. *Hepatology*. 2018 Jan;67(1):123–33.
- 10 Chalasani N, Younossi Z, Lavine JE, Diehl AM, Brunt EM, Cusi K, et al. The diagnosis and management of non-alcoholic fatty liver disease: practice guideline by the American Association for the study of liver diseases, American College of Gastroenterology, and the American Gastroenterological Association. *Hepatology*. 2012 Jun;55(6):2005–23.
- 11 Calzadilla Bertot L, Adams LA. The natural course of non-alcoholic fatty liver disease. *Int J Mol Sci*. 2016 May;17(5):774.
- 12 Loomba R, Adams LA. The 20% rule of NASH progression: the natural history of advanced fibrosis and cirrhosis caused by NASH. *Hepatology*. 2019 Dec;70(6):1885–8.
- 13 Anstee QM, Reeves HL, Kotsiliti E, Govaere O, Heikenwalder M. From NASH to HCC: current concepts and future challenges. *Nat Rev Gastroenterol Hepatol*. 2019 Jul;16(7):411–28.
- 14 Brunt EM, Janney CG, Di Bisceglie AM, Neuschwander-Tetri BA, Bacon BR. Nonalcoholic steatohepatitis: a proposal for grading and staging the histological lesions. *Am J Gastroenterol*. 1999 Sep;94:2467–74.
- 15 Goldberg D, Ditah IC, Saeian K, Lalehzari M, Aronsohn A, Gorospe EC, et al. Changes in the prevalence of hepatitis C virus infection, nonalcoholic steatohepatitis, and alcoholic liver disease among patients with cirrhosis or liver failure on the waitlist for liver transplantation. *Gastroenterology*. 2017 Apr;152(5):1090–99.e1.
- 16 Charlton MR, Burns JM, Pedersen RA, Watt KD, Heimbach JK, Dierkhising RA. Frequency and outcomes of liver transplantation for nonalcoholic steatohepatitis in the United States. *Gastroenterology*. 2011 Oct;141(4):1249–53.
- 17 Mittal S, El-Serag HB, Sada YH, Kanwal F, Duan Z, Temple S, et al. Hepatocellular carcinoma in the absence of cirrhosis in United States Veterans is associated with nonalcoholic fatty liver disease. *Clin Gastroenterol Hepatol*. 2016 Jan;14(1):124–31.e1.
- 18 Parikh ND, Marrero WJ, Wang J, Steuer J, Tapper EB, Konerman M, et al. Projected increase in obesity and non-alcoholic-steatohepatitis-related liver transplantation waitlist additions in the United States. *Hepatology*. 2019 Aug;70(2):487–95.
- 19 Konerman MA, Jones JC, Harrison SA. Pharmacotherapy for NASH: current and emerging. *J Hepatol*. 2018 Feb;68(2):362–75.
- 20 European Association for the Study of the Liver (EASL); European Association for the Study of Diabetes (EASD); European Association for the Study of Obesity (EASO). EASL-EASD-EASO clinical practice guidelines for the management of non-alcoholic fatty liver disease. *Obes Facts*. 2016;9(2):65–90.
- 21 Cusi K. Role of obesity and lipotoxicity in the development of nonalcoholic steatohepatitis: pathophysiology and clinical implications. *Gastroenterology*. 2012 Apr;142(4):711–25.e6.
- 22 Neuschwander-Tetri BA. Hepatic lipotoxicity and the pathogenesis of nonalcoholic steatohepatitis: the central role of nontriglyceride fatty acid metabolites. *Hepatology*. 2010 Aug;52(2):774–88.
- 23 Aron-Wisnewsky J, Vigiotti C, Witjes J, Le P, Holleboom AG, Verheij J, et al. Gut microbiota and human NAFLD: disentangling microbial signatures from metabolic disorders. *Nat Rev Gastroenterol Hepatol*. 2020 May;17(5):279–97.
- 24 Kazankov K, Jørgensen SMD, Thomsen KL, Møller HJ, Vilstrup H, George J, et al. The role of macrophages in nonalcoholic fatty liver disease and nonalcoholic steatohepatitis. *Nat Rev Gastroenterol Hepatol*. 2019 Mar;16(3):145–59.
- 25 Arrese M, Cabrera D, Kalergis AM, Feldstein AE. Innate immunity and inflammation in NAFLD/NASH. *Dig Dis Sci*. 2016 May;61(5):1294–303.
- 26 Fujita T, Narumiya S. Roles of hepatic stellate cells in liver inflammation: a new perspective. *Inflamm Regen*. 2016 Apr;36:1.
- 27 Nati M, Haddad D, Birkenfeld AL, Koch CA, Chavakis T, Chatzigeorgiou A. The role of immune cells in metabolism-related liver inflammation and development of non-alcoholic steatohepatitis (NASH). *Rev Endocr Metab Disord*. 2016 Mar;17(1):29–39.
- 28 Cai J, Zhang XJ, Li H. The role of innate immune cells in nonalcoholic steatohepatitis. *Hepatology*. 2019 Sep;70(3):1026–37.
- 29 Katsarou A, Moustakas II, Pyrina I, Lembessis P, Koutsilieris M, Chatzigeorgiou A. Metabolic inflammation as an instigator of fibrosis during non-alcoholic fatty liver disease. *World J Gastroenterol*. 2020 May;26(17):1993–2011.
- 30 Ganz M, Szabo G. Immune and inflammatory pathways in NASH. *Hepatol Int*. 2013 Aug;7(Suppl 2):771–81.
- 31 Rosales C. Neutrophil: a cell with many roles in inflammation or several cell types? *Front Physiol*. 2018 Feb;9:113.
- 32 Kennedy AD, DeLeo FR. Neutrophil apoptosis and the resolution of infection. *Immunol Res*. 2009;43(1–3):25–61.
- 33 Kourtzelis I, Mitroulis I, von Renesse J, Hachisengallis G, Chavakis T. From leukocyte recruitment to resolution of inflammation: the cardinal role of integrins. *J Leukoc Biol*. 2017 Sep;102(3):677–83.
- 34 Wang J, Hossain M, Thanabalasuriar A, Gunzer M, Meininger C, Kubes P. Visualizing the function and fate of neutrophils in sterile injury and repair. *Science*. 2017 Oct;358(6359):111–6.
- 35 Honda M, Takeichi T, Hashimoto S, Yoshii D, Isono K, Hayashida S, et al. Intravital imaging of neutrophil recruitment reveals the efficacy of FPRI blockade in hepatic ischemia-reperfusion injury. *J Immunol*. 2017 Feb;198(4):1718–28.
- 36 Slaba I, Wang J, Kolaczowska E, McDonald B, Lee WY, Kubes P. Imaging the dynamic platelet-neutrophil response in sterile liver injury and repair in mice. *Hepatology*. 2015 Nov;62(5):1593–605.
- 37 de Oliveira THC, Marques PE, Poosti F, Ruytinx P, Amaral FA, Brandolini L, et al. Intravital microscopic evaluation of the effects of a CXCR2 antagonist in a model of liver ischemia reperfusion injury in mice. *Front Immunol*. 2018 Jan;8:1917.
- 38 Gadd VL, Skoien R, Powell EE, Fagan KJ, Winterford C, Horsfall L, et al. The portal inflammatory infiltrate and ductular reaction in human nonalcoholic fatty liver disease. *Hepatology*. 2014 Apr;59(4):1393–405.
- 39 Rensen SS, Slaats Y, Nijhuis J, Jans A, Bieghs V, Driessen A, et al. Increased hepatic myeloperoxidase activity in obese subjects with nonalcoholic steatohepatitis. *Am J Pathol*. 2009 Oct;175(4):1473–82.
- 40 Alkhouiri N, Morris-Stiff G, Campbell C, Lopez R, Tamimi TA, Yerian L, et al. Neutrophil to lymphocyte ratio: a new marker for predicting steatohepatitis and fibrosis in patients with nonalcoholic fatty liver disease. *Liver Int*. 2012 Feb;32(2):297–302.
- 41 Ou R, Liu J, Lv M, Wang J, Wang J, Zhu L, et al. Neutrophil depletion improves diet-induced non-alcoholic fatty liver disease in mice. *Endocrine*. 2017 Jul;57(1):72–82.
- 42 Zang S, Wang L, Ma X, Zhu G, Zhuang Z, Xun Y, et al. Neutrophils play a crucial role in the early stage of nonalcoholic steatohepatitis via neutrophil elastase in mice. *Cell Biochem Biophys*. 2015 Nov;73(2):479–87.
- 43 Haczeyni F, Yeh MM, Ioannou GN, Leclercq IA, Goldin R, Dan YY, et al. Mouse models of non-alcoholic steatohepatitis: a reflection on recent literature. *J Gastroenterol Hepatol*. 2018 Jul;33(7):1312–20.

- 44 Calvente CJ, Tameda M, Johnson CD, del Pilar H, Lin YC, Adronikou N, et al. Neutrophils contribute to spontaneous resolution of liver inflammation and fibrosis via microRNA-223. *J Clin Invest*. 2019 Jul;129(10):4091–109.
- 45 Boeltz S, Amini P, Anders HJ, Andrade F, Bilyy R, Chatfield S, et al. To NET or not to NET: current opinions and state of the science regarding the formation of neutrophil extracellular traps. *Cell Death Differ*. 2019 Mar;26(3):395–408.
- 46 van der Windt DJ, Sud V, Zhang H, Varley PR, Goswami J, Yazdani HO, et al. Neutrophil extracellular traps promote inflammation and development of hepatocellular carcinoma in nonalcoholic steatohepatitis. *Hepatology*. 2018 Oct;68(4):1347–60.
- 47 Zhao X, Yang L, Chang N, Hou L, Zhou X, Yang L, et al. Neutrophils undergo switch of apoptosis to NETosis during murine fatty liver injury via S1P receptor 2 signaling. *Cell Death Dis*. 2020 May;11(5):379.
- 48 Wu L, Gao X, Guo Q, Li J, Yao J, Yan K, et al. The role of neutrophils in innate immunity-driven nonalcoholic steatohepatitis: lessons learned and future promise. *Hepatology*. 2020 Sep;71(5):652–66.
- 49 Klebanoff SJ. Myeloperoxidase: friend and foe. *J Leukoc Biol*. 2005 May;77(5):598–625.
- 50 Canny G, Levy O. Bactericidal/permeability-increasing protein (BPI) and BPI homologs at mucosal sites. *Trends Immunol*. 2008 Nov;29(11):541–7.
- 51 Kaplan MJ, Radic M. Neutrophil extracellular traps: double-edged swords of innate immunity. *J Immunol*. 2012 Sep;189(6):2689–95.
- 52 Scheenstra MR, van Harten RM, Veldhuizen EJA, Haagsman HP, Coorens M. Cathelicidins modulate TLR-activation and inflammation. *Front Immunol*. 2020 Jun;11:1137.
- 53 Inzaugarat ME, Ferreyra Solari NE, Billordo LA, Abecasis R, Gadano AC, Cherkovskiy AC. Altered phenotype and functionality of circulating immune cells characterize adult patients with nonalcoholic steatohepatitis. *J Clin Immunol*. 2011 Dec;31(6):1120–30.
- 54 Chavakis T, Mitroulis I, Hajishengallis G. Hematopoietic progenitor cells as integrative hubs for adaptation to and fine-tuning of inflammation. *Nat Immunol*. 2019 Jul;20(7):802–11.
- 55 Kalafati L, Kourtzelis I, Schulte-Schrepping J, Li X, Hatzioannou A, Grinenko T, et al. Innate immune training of granulopoiesis promotes anti-tumor activity. *Cell*. 2020 Oct;183(3):771–85.e12.
- 56 Penkov S, Mitroulis I, Hajishengallis G, Chavakis T. Immunometabolic crosstalk: an ancestral principle of trained immunity? *Trends Immunol*. 2019 Jan;40(1):1–11.
- 57 Novo E, Busletta C, Bonzo LV, Povero D, Paternostro C, Mareschi K, et al. Intracellular reactive oxygen species are required for directional migration of resident and bone marrow-derived hepatic pro-fibrogenic cells. *J Hepatol*. 2011 May;54(5):964–74.
- 58 Schults MA, Nagle PW, Rensen SS, Godschalk RW, Munnia A, Peluso M, et al. Decreased nucleotide excision repair in steatotic livers associates with myeloperoxidase-immunoreactivity. *Mutat Res*. 2012 Aug;736(1–2):75–81.
- 59 Pulli B, Ali M, Iwamoto Y, Zeller MW, Schob S, Linnoila JJ, et al. Myeloperoxidase-hepatocyte-stellate cell cross talk promotes hepatocyte injury and fibrosis in experimental non-alcoholic steatohepatitis. *Antioxid Redox Signal*. 2015 Dec;23(16):1255–69.
- 60 Rensen SS, Bieghs V, Xanthoulea S, Arfianti E, Bakker JA, Shiri-Sverdlov R, et al. Neutrophil-derived myeloperoxidase aggravates non-alcoholic steatohepatitis in low-density lipoprotein receptor-deficient mice. *PLoS One*. 2012;7(12):e52411.
- 61 Zhou Z, Xu MJ, Cai Y, Wang W, Jiang JX, Varga ZV, et al. Neutrophil-hepatic stellate cell interactions promote fibrosis in experimental steatohepatitis. *Cell Mol Gastroenterol Hepatol*. 2018 Jan;5(3):399–413.
- 62 Ibusuki R, Uto H, Arima S, Mawatari S, Setoguchi Y, Iwashita Y, et al. Transgenic expression of human neutrophil peptide-1 enhances hepatic fibrosis in mice fed a choline-deficient, L-amino acid-defined diet. *Liver Int*. 2013 Nov;33(10):1549–56.
- 63 Zang S, Ma X, Zhuang Z, Liu J, Bian D, Xun Y, et al. Increased ratio of neutrophil elastase to α 1-antitrypsin is closely associated with liver inflammation in patients with nonalcoholic steatohepatitis. *Clin Exp Pharmacol Physiol*. 2016 Jan;43(1):13–21.
- 64 Mirea AM, Toonen EJM, van den Munckhof I, Munsterman ID, Tjwa ETTL, Jaeger M, et al. Increased proteinase 3 and neutrophil elastase plasma concentrations are associated with non-alcoholic fatty liver disease (NAFLD) and type 2 diabetes. *Mol Med*. 2019 May;25(1):16.
- 65 Ye D, Yang K, Zang S, Lin Z, Chau HT, Wang Y, et al. Lipocalin-2 mediates non-alcoholic steatohepatitis by promoting neutrophil-macrophage crosstalk via the induction of CXCR2. *J Hepatol*. 2016 Nov;65(5):988–97.
- 66 Auguet T, Terra X, Quintero Y, Martínez S, Manresa N, Porras JA, et al. Liver lipocalin 2 expression in severely obese women with non-alcoholic fatty liver disease. *Exp Clin Endocrinol Diabetes*. 2013 Feb;121(2):119–24.
- 67 Talukdar S, Oh DY, Bandyopadhyay G, Li D, Xu J, McNelis J, et al. Neutrophils mediate insulin resistance in mice fed a high-fat diet through secreted elastase. *Nat Med*. 2012 Sep;18(9):1407–12.
- 68 Mansuy-Aubert V, Zhou QL, Xie X, Gong Z, Huang JY, Khan AR, et al. Imbalance between neutrophil elastase and its inhibitor α 1-antitrypsin in obesity alters insulin sensitivity, inflammation, and energy expenditure. *Cell Metab*. 2013 Apr;17(4):534–48.
- 69 Mirea AM, Stienstra R, Kanneganti TD, Tack CJ, Chavakis T, Toonen EJM, et al. Mice deficient in the IL-1 β activation genes Prtn3, Elane, and Casp1 are protected against the development of obesity-induced NAFLD. *Inflammation*. 2020 Jun;43(3):1054–64.
- 70 Mirea AM, Tack CJ, Chavakis T, Joosten LAB, Toonen EJM. IL-1 family cytokine pathways underlying NAFLD: towards new treatment strategies. *Trends Mol Med*. 2018 May;24(5):458–71.
- 71 Dixon LJ, Barnes M, Tang H, Pritchard MT, Nagy LE. Kupffer cells in the liver. *Compr Physiol*. 2013 Apr;3(2):785–97.
- 72 Wen Y, Lambrecht J, Ju C, Tacke F. Hepatic macrophages in liver homeostasis and diseases: diversity, plasticity and therapeutic opportunities. *Cell Mol Immunol*. 2021 Jan;18(1):45–56.
- 73 Ginhoux F, Guillemin M. Tissue-resident macrophage ontogeny and homeostasis. *Immunity*. 2016 Mar;44(3):439–49.
- 74 Schulz C, Gomez Pedriguero E, Chorro L, Szabo-Rogers H, Cagnard N, Kierdorf K, et al. A lineage of myeloid cells independent of Myb and hematopoietic stem cells. *Science*. 2012 Apr;336(6077):86–90.
- 75 Remmerie A, Martens L, Scott CL. Macrophage subsets in obesity, aligning the liver and adipose tissue. *Front Endocrinol*. 2020 Apr;11(259):259.
- 76 Lavin Y, Winter D, Blecher-Gonen R, David E, Keren-Shaul H, Merad M, et al. Tissue-resident macrophage enhancer landscapes are shaped by the local microenvironment. *Cell*. 2014 Dec;159(6):1312–26.
- 77 Scott CL, Zheng F, De Baetselier P, Martens L, Saey Y, De Prijck S, et al. Bone marrow-derived monocytes give rise to self-renewing and fully differentiated Kupffer cells. *Nat Commun*. 2016 Jan;7(1):10321.
- 78 Kourtzelis I, Hajishengallis G, Chavakis T. Phagocytosis of apoptotic cells in resolution of inflammation. *Front Immunol*. 2020 Mar;11:553.
- 79 Daemen S, Gainullina A, Kalugotla G, He L, Chan MM, Beals JW, et al. Dynamic shifts in the composition of resident and recruited macrophages influence tissue remodeling in NASH. *Cell Rep*. 2021 Jan;34(2):108626.
- 80 Blériot C, Ginhoux F. Understanding the heterogeneity of resident liver macrophages. *Front Immunol*. 2019 Nov;10:2694.
- 81 Park JW, Jeong G, Kim SJ, Kim MK, Park SM. Predictors reflecting the pathological severity of non-alcoholic fatty liver disease: comprehensive study of clinical and immunohistochemical findings in younger Asian patients. *J Gastroenterol Hepatol*. 2007 Apr;22(4):491–7.
- 82 Itoh M, Kato H, Suganami T, Konuma K, Marumoto Y, Terai S, et al. Hepatic crown-like structure: a unique histological feature in non-alcoholic steatohepatitis in mice and humans. *PLoS One*. 2013 Dec;8(12):e82163.
- 83 Guillot A, Tacke F. Liver macrophages: old dogmas and new insights. *Hepatology*. 2019 Apr;3(6):730–43.
- 84 Huang W, Metlakunta A, Dedousis N, Zhang P, Sipula I, Dube JJ, et al. Depletion of liver Kupffer cells prevents the development of diet-induced hepatic steatosis and insulin resistance. *Diabetes*. 2010 Feb;59(2):347–57.

- 85 Lanthier N, Molendi-Coste O, Cani PD, van Rooijen N, Horsmans Y, Leclercq IA. Kupffer cell depletion prevents but has no therapeutic effect on metabolic and inflammatory changes induced by a high-fat diet. *FASEB J*. 2011 Dec;25(12):4301–11.
- 86 Rivera CA, Adegboyega P, van Rooijen N, Tagalicud A, Allman M, Wallace M. Toll-like receptor-4 signaling and Kupffer cells play pivotal roles in the pathogenesis of non-alcoholic steatohepatitis. *J Hepatol*. 2007 Oct;47(4):571–9.
- 87 Li L, Chen L, Hu L, Liu Y, Sun HY, Tang J, et al. Nuclear factor high-mobility group box1 mediating the activation of toll-like receptor 4 signaling in hepatocytes in the early stage of nonalcoholic fatty liver disease in mice. *Hepatology*. 2011 Nov;54(5):1620–30.
- 88 Lanthier N, Molendi-Coste O, Horsmans Y, van Rooijen N, Cani PD, Leclercq IA. Kupffer cell activation is a causal factor for hepatic insulin resistance. *Am J Physiol Gastrointest Liver Physiol*. 2010 Jan;298(1):G107–16.
- 89 Neyrinck AM, Cani PD, Dewulf EM, De Backer F, Bindels LB, Delzenne NM. Critical role of Kupffer cells in the management of diet-induced diabetes and obesity. *Biochem Biophys Res Commun*. 2009 Jul;385(3):351–6.
- 90 Tosello-Tramont AC, Landes SG, Nguyen V, Novobrantseva TI, Hahn YS. Kupffer cells trigger nonalcoholic steatohepatitis development in diet-induced mouse model through tumor necrosis factor- α production. *J Biol Chem*. 2012 Nov;287(48):40161–72.
- 91 Miura K, Yang L, van Rooijen N, Ohnishi H, Seki E. Hepatic recruitment of macrophages promotes nonalcoholic steatohepatitis through CCR2. *Am J Physiol Gastrointest Liver Physiol*. 2012 Jun;302(11):G1310–21.
- 92 Shi H, Kokoeva MV, Inouye K, Tzamelis I, Yin H, Flier JS. TLR4 links innate immunity and fatty acid-induced insulin resistance. *J Clin Invest*. 2006 Nov;116(11):3015–25.
- 93 Miura K, Yang L, van Rooijen N, Brenner DA, Ohnishi H, Seki E. Toll-like receptor 2 and palmitic acid cooperatively contribute to the development of nonalcoholic steatohepatitis through inflammasome activation in mice. *Hepatology*. 2013 Feb;57(2):577–89.
- 94 Kim SY, Jeong JM, Kim SJ, Seo W, Kim MH, Choi WM, et al. Pro-inflammatory hepatic macrophages generate ROS through NADPH oxidase 2 via endocytosis of monomeric TLR4-MD2 complex. *Nat Commun*. 2017 Dec;8(1):2247.
- 95 Böhm T, Berger H, Nejabat M, Riegler T, Kellner F, Kuttke M, et al. Food-derived peroxidized fatty acids may trigger hepatic inflammation: a novel hypothesis to explain steatohepatitis. *J Hepatol*. 2013 Sep;59(3):563–70.
- 96 Obara N, Fukushima K, Ueno Y, Wakui Y, Kimura O, Tamai K, et al. Possible involvement and the mechanisms of excess trans-fatty acid consumption in severe NAFLD in mice. *J Hepatol*. 2010 Aug;53(2):326–34.
- 97 Li Z, Lin H, Yang S, Diehl AM. Murine leptin deficiency alters Kupffer cell production of cytokines that regulate the innate immune system. *Gastroenterology*. 2002 Oct;123(4):1304–10.
- 98 Wang J, Leclercq I, Brymora JM, Xu N, Ramezani-Moghadam M, London RM, et al. Kupffer cells mediate leptin-induced liver fibrosis. *Gastroenterology*. 2009 Aug;137(2):713–23.
- 99 Chatterjee S, Ganini D, Tokar EJ, Kumar A, Das S, Corbett J, et al. Leptin is key to peroxynitrite-mediated oxidative stress and Kupffer cell activation in experimental non-alcoholic steatohepatitis. *J Hepatol*. 2013 Apr;58(4):778–84.
- 100 Fukushima J, Kamada Y, Matsumoto H, Yoshida Y, Ezaki H, Takemura T, et al. Adiponectin prevents progression of steatohepatitis in mice by regulating oxidative stress and Kupffer cell phenotype polarization. *Hepatology Res*. 2009 Jul;39(7):724–38.
- 101 Luo N, Chung BH, Wang X, Klein RL, Tang CK, Garvey WT, et al. Enhanced adiponectin actions by overexpression of adiponectin receptor 1 in macrophages. *Atherosclerosis*. 2013 May;228(1):124–35.
- 102 Marra F, Svegliati-Baroni G. Lipotoxicity and the gut-liver axis in NASH pathogenesis. *J Hepatol*. 2018 Feb;68(2):280–95.
- 103 Vespasiani-Gentilucci U, Carotti S, Perrone G, Mazzarelli C, Galati G, Onetti-Muda A, et al. Hepatic toll-like receptor 4 expression is associated with portal inflammation and fibrosis in patients with NAFLD. *Liver Int*. 2015 Feb;35(2):569–81.
- 104 Ye D, Li FY, Lam KS, Li H, Jia W, Wang Y, et al. Toll-like receptor-4 mediates obesity-induced non-alcoholic steatohepatitis through activation of X-box binding protein-1 in mice. *Gut*. 2012 Jul;61(7):1058–67.
- 105 Spruss A, Kanuri G, Wagnerberger S, Haub S, Bischoff SC, Bergheim I. Toll-like receptor 4 is involved in the development of fructose-induced hepatic steatosis in mice. *Hepatology*. 2009 Oct;50(4):1094–104.
- 106 Miura K, Kodama Y, Inokuchi S, Schnabl B, Aoyama T, Ohnishi H, et al. Toll-like receptor 9 promotes steatohepatitis by induction of interleukin-1 β in mice. *Gastroenterology*. 2010 Jul;139(1):323–34.e7.
- 107 Stienstra R, Saudale F, Duval C, Keshtkar S, Groener JE, van Rooijen N, et al. Kupffer cells promote hepatic steatosis via interleukin-1 β -dependent suppression of peroxisome proliferator-activated receptor alpha activity. *Hepatology*. 2010 Feb;51(2):511–22.
- 108 Ioannou GN. The role of cholesterol in the pathogenesis of NASH. *Trends Endocrinol Metab*. 2016 Feb;27(2):84–95.
- 109 Chung KJ, Nati M, Chavakis T, Chatzigeorgiou A. Innate immune cells in the adipose tissue. *Rev Endocr Metab Disord*. 2018 Dec;19(4):283–92.
- 110 Chung KJ, Chatzigeorgiou A, Economopoulou M, Garcia-Martin R, Alexaki VI, Mitroutis I, et al. A self-sustained loop of inflammation-driven inhibition of beige adipogenesis in obesity. *Nat Immunol*. 2017 Jun;18(6):654–64.
- 111 Ioannou GN, Haigh WG, Thorning D, Savard C. Hepatic cholesterol crystals and crown-like structures distinguish NASH from simple steatosis. *J Lipid Res*. 2013 May;54(5):1326–34.
- 112 Bieghs V, Verheyen F, van Gorp PJ, Hendriks T, Wouters K, Lütjohann D, et al. Internalization of modified lipids by CD36 and SR-A leads to hepatic inflammation and lysosomal cholesterol storage in Kupffer cells. *PLoS One*. 2012;7(3):e34378.
- 113 Bieghs V, Walenbergh SM, Hendriks T, van Gorp PJ, Verheyen F, Olde Damink SW, et al. Trapping of oxidized LDL in lysosomes of Kupffer cells is a trigger for hepatic inflammation. *Liver Int*. 2013 Aug;33(7):1056–61.
- 114 Ioannou GN, Van Rooyen DM, Savard C, Haigh WG, Yeh MM, Teoh NC, et al. Cholesterol-lowering drugs cause dissolution of cholesterol crystals and disperse Kupffer cell crown-like structures during resolution of NASH. *J Lipid Res*. 2015 Feb;56(2):277–85.
- 115 Walenbergh SM, Koek GH, Bieghs V, Shirisverdlov R. Non-alcoholic steatohepatitis: the role of oxidized low-density lipoproteins. *J Hepatol*. 2013 Apr;58(4):801–10.
- 116 Ioannou GN, Subramanian S, Chait A, Haigh WG, Yeh MM, Farrell GC, et al. Cholesterol crystallization within hepatocyte lipid droplets and its role in murine NASH. *J Lipid Res*. 2017 Jun;58(6):1067–79.
- 117 Leroux A, Ferrere G, Godie V, Cailleux F, Renoud ML, Gaudin F, et al. Toxic lipids stored by Kupffer cells correlates with their pro-inflammatory phenotype at an early stage of steatohepatitis. *J Hepatol*. 2012 Jul;57(1):141–9.
- 118 Tercan H, Riksen NP, Joosten LAB, Netea MG, Bekkering S. Trained immunity: long-term adaptation in innate immune responses. *Arterioscler Thromb Vasc Biol*. 2021 Jan;41(1):55–61.
- 119 Akazawa Y, Nakao K. To die or not to die: death signaling in nonalcoholic fatty liver disease. *J Gastroenterol*. 2018 Aug;53(8):893–906.
- 120 Canbay A, Feldstein AE, Higuchi H, Wernburg N, Grambihler A, Bronk SF, et al. Kupffer cell engulfment of apoptotic bodies stimulates death ligand and cytokine expression. *Hepatology*. 2003 Nov;38(5):1188–98.
- 121 Mihm S. Danger-associated molecular patterns (DAMPs): molecular triggers for sterile inflammation in the liver. *Int J Mol Sci*. 2018 Oct;19(10):3104.
- 122 Garcia-Martinez I, Santoro N, Chen Y, Hoque R, Ouyang X, Caprio S, et al. Hepatocyte mitochondrial DNA drives nonalcoholic steatohepatitis by activation of TLR9. *J Clin Invest*. 2016 Mar;126(3):859–64.

- 123 Ishimaru M, Yusuke N, Tsukimoto M, Harada H, Takenouchi T, Kitani H, et al. Puri-nergic signaling via P2Y receptors up-mediate IL-6 production by liver macrophages/Kupffer cells. *J Toxicol Sci.* 2014 Jun;39(3):413–23.
- 124 Morinaga H, Mayoral R, Heinrichsdorff J, Osborn O, Franck N, Hah N, et al. Characterization of distinct subpopulations of hepatic macrophages in HFD/obese mice. *Diabetes.* 2015 Apr;64(4):1120–30.
- 125 Krenkel O, Tacke F. Liver macrophages in tissue homeostasis and disease. *Nat Rev Immunol.* 2017 May;17(5):306–21.
- 126 Krenkel O, Puengel T, Govaere O, Abdallah AT, Mossanen JC, Kohlhepp M, et al. Therapeutic inhibition of inflammatory monocyte recruitment reduces steatohepatitis and liver fibrosis. *Hepatology.* 2018 Apr;67(4):1270–83.
- 127 Duffield JS, Forbes SJ, Constandinou CM, Clay S, Partolina M, Vuthoori S, et al. Selective depletion of macrophages reveals distinct, opposing roles during liver injury and repair. *J Clin Invest.* 2005 Jan;115(1):56–65.
- 128 Wan J, Benkdane M, Teixeira-Clerc F, Bonnafous S, Louvet A, Lafdil F, et al. M2 Kupffer cells promote M1 Kupffer cell apoptosis: a protective mechanism against alcoholic and nonalcoholic fatty liver disease. *Hepatology.* 2014 Jan;59(1):130–42.
- 129 Crespo J, Cayón A, Fernández-Gil P, Hernández-Guerra M, Mayorga M, Domínguez-Díez A, et al. Gene expression of tumor necrosis factor alpha and TNF-receptors, p55 and p75, in nonalcoholic steatohepatitis patients. *Hepatology.* 2001 Dec;34(6):1158–63.
- 130 De Taeye BM, Novitskaya T, McGuinness OP, Gleaves L, Medda M, Covington JW, et al. Macrophage TNF-alpha contributes to insulin resistance and hepatic steatosis in diet-induced obesity. *Am J Physiol Endocrinol Metab.* 2007 Sep;293(3):E713–25.
- 131 Dixon LJ, Berk M, Thapaliya S, Papouchado BG, Feldstein AE. Caspase-1-mediated regulation of fibrogenesis in diet-induced steatohepatitis. *Lab Invest.* 2012 May;92(5):713–23.
- 132 Pradere JP, Kluwe J, De Minicis S, Jiao JJ, Gwak GY, Dapito DH, et al. Hepatic macrophages but not dendritic cells contribute to liver fibrosis by promoting the survival of activated hepatic stellate cells in mice. *Hepatology.* 2013 Oct;58(4):1461–73.
- 133 Tomita K, Tamiya G, Ando S, Ohsumi K, Chiyo T, Mizutani A, et al. Tumour necrosis factor alpha signalling through activation of Kupffer cells plays an essential role in liver fibrosis of non-alcoholic steatohepatitis in mice. *Gut.* 2006 Mar;55(3):415–24.
- 134 Kiagiadakis F, Kampa M, Voumvouraki A, Castanas E, Kouroumalis E, Notas G. Activin-A causes hepatic stellate cell activation via the induction of TNF α and TGF β in Kupffer cells. *Biochim Biophys Acta Mol Basis Dis.* 2018 Mar;1864(3):891–9.
- 135 Cai B, Dongiovanni P, Corey KE, Wang X, Shmarakov IO, Zheng Z, et al. Macrophage MerTK promotes liver fibrosis in nonalcoholic steatohepatitis. *Cell Metab.* 2020 Feb;31(2):406–21.e7.
- 136 Okina Y, Sato-Matsubara M, Matsubara T, Daikoku A, Longato L, Rombouts K, et al. TGF- β 1-driven reduction of cytoglobin leads to oxidative DNA damage in stellate cells during non-alcoholic steatohepatitis. *J Hepatol.* 2020 Oct;73(4):882–95.
- 137 McGettigan B, McMahan R, Orlicky D, Burchill M, Danhorn T, Francis P, et al. Dietary lipids differentially shape nonalcoholic steatohepatitis progression and the transcriptome of Kupffer cells and infiltrating macrophages. *Hepatology.* 2019 Jul;70(1):67–83.
- 138 Krenkel O, Hundertmark J, Abdallah AT, Kohlhepp M, Puengel T, Roth T, et al. Myeloid cells in liver and bone marrow acquire a functionally distinct inflammatory phenotype during obesity-related steatohepatitis. *Gut.* 2020 Mar;69(3):551–63.
- 139 Xiong X, Kuang H, Ansari S, Liu T, Gong J, Wang S, et al. Landscape of intercellular crosstalk in healthy and NASH liver revealed by single-cell secretome gene analysis. *Mol Cell.* 2019 Aug;75(3):644–60.e5.
- 140 Jaitin DA, Adlung L, Thaiss CA, Weiner A, Li B, Descamps H, et al. Lipid-associated macrophages control metabolic homeostasis in a Trem2-dependent manner. *Cell.* 2019 Jul;178(3):686–98.e14.
- 141 Ramachandran P, Dobie R, Wilson-Kanamori JR, Dora EF, Henderson BEP, Luu NT, et al. Resolving the fibrotic niche of human liver cirrhosis at single-cell level. *Nature.* 2019 Nov;575(7783):512–8.
- 142 Seidman JS, Troutman TD, Sakai M, Gola A, Spann NJ, Bennett H, et al. Niche-specific reprogramming of epigenetic landscapes drives myeloid cell diversity in nonalcoholic steatohepatitis. *Immunity.* 2020 Jun;52(6):1057–74.e7.
- 143 Remmerie A, Martens L, Thoné T, Castoldi A, Seurinck R, Pavie B, et al. Osteopontin expression identifies a subset of recruited macrophages distinct from Kupffer cells in the fatty liver. *Immunity.* 2020 Sep;53(3):641–57.e14.
- 144 Tran S, Baba I, Poupel L, Dussaud S, Moreau M, Gélinau A, et al. Impaired Kupffer cell self-renewal alters the liver response to lipid overload during non-alcoholic steatohepatitis. *Immunity.* 2020 Sep;53(3):627–40.e5.
- 145 Grunhut J, Wang W, Aykut B, Gakhal I, Torres-Hernandez A, Miller G. Macrophages in nonalcoholic steatohepatitis: friend or foe? *Eur Med J Hepatol.* 2018;6(1):100–9.
- 146 Tacke F. Functional role of intrahepatic monocyte subsets for the progression of liver inflammation and liver fibrosis in vivo. *Fibrogenesis Tissue Repair.* 2012 Jun;5(Suppl 1):S27.
- 147 Tacke F, Zimmermann HW. Macrophage heterogeneity in liver injury and fibrosis. *J Hepatol.* 2014 May;60(5):1090–6.
- 148 Beattie L, Sawtell A, Mann J, Frame TCM, Teal B, de Labastida Rivera F, et al. Bone marrow-derived and resident liver macrophages display unique transcriptomic signatures but similar biological functions. *J Hepatol.* 2016 Oct;65(4):758–68.
- 149 Sakai M, Troutman TD, Seidman JS, Ouyang Z, Spann NJ, Abe Y, et al. Liver-derived signals sequentially reprogram myeloid enhancers to initiate and maintain Kupffer cell identity. *Immunity.* 2019 Oct;51(4):655–70.e8.
- 150 Bonnardeil J, T’Jonck W, Gaublotte D, Browaeys R, Scott CL, Martens L, et al. Stellate cells, hepatocytes, and endothelial cells imprint the Kupffer cell identity on monocytes colonizing the liver macrophage niche. *Immunity.* 2019 Oct;51(4):638–54.e9.
- 151 Devisscher L, Scott CL, Lefere S, Raevens S, Bogaerts E, Paridaens A, et al. Non-alcoholic steatohepatitis induces transient changes within the liver macrophage pool. *Cell Immunol.* 2017 Dec;322:74–83.
- 152 Friedman SL, Ratzliff V, Harrison SA, Abdelmalek MF, Aithal GP, Caballeria J, et al. A randomized, placebo-controlled trial of cenicriviroc for treatment of nonalcoholic steatohepatitis with fibrosis. *Hepatology.* 2018 May;67(5):1754–67.
- 153 Anstee QM, Neuschwander-Tetri BA, Wong VW, Abdelmalek MF, Younossi ZM, Yuan J, et al. Cenicriviroc for the treatment of liver fibrosis in adults with nonalcoholic steatohepatitis: AURORA phase 3 study design. *Contemp Clin Trials.* 2020 Feb;89:105922.
- 154 Dufour JF, Caussy C, Loomba R. Combination therapy for non-alcoholic steatohepatitis: rationale, opportunities and challenges. *Gut.* 2020 Oct;69(10):1877–84.