

In the article entitled “Addendum to the German Consensus Recommendations on Ponatinib in the Treatment of Chronic Myeloid Leukemia” [Acta Haematol. 2023; DOI: 10.1159/000533666] by Saussele et al., there is an error in Figure 1 which was incorrectly inserted by the authors. The correct sentence is as follows: “ $\leq 1\%$ BCR::ABL^{IS} by 12 months” instead of “ $\leq 1\%$ BCR::ABL^{IS} at 12 months”.

The corrected Figure 1 is shown here.

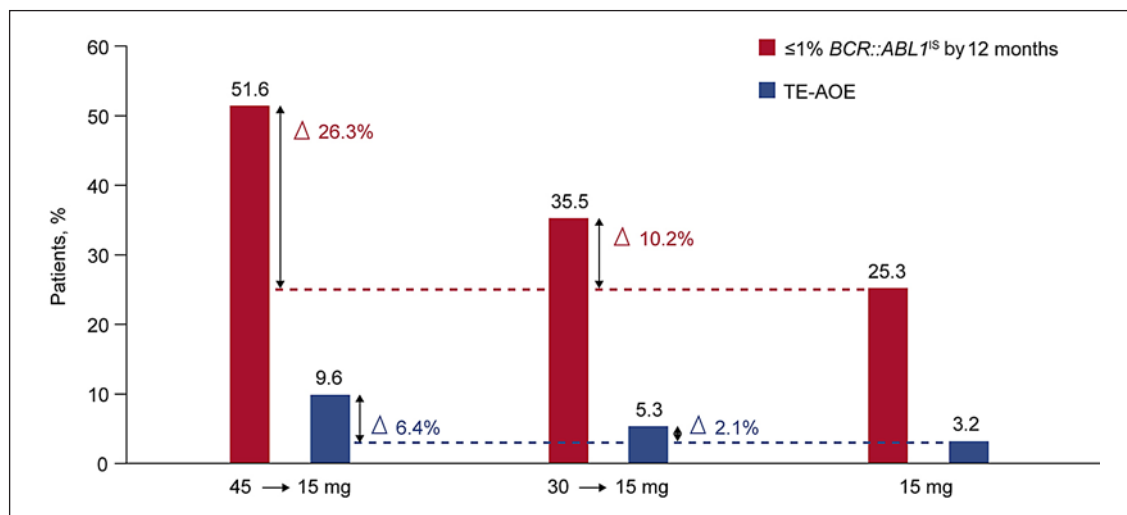


Fig. 1. Descriptive clinical summary of response rates and AOE rates by ponatinib starting dose in the OPTIC trial (adapted from [8]). TE-AOE, treatment-emergent arterial occlusive events.