

Errata

In Prasad et al, "Fibroadenoma of Ectopic Breast Tissue in the Vulva: A Case Report" (*Acta Cytologica* 1995;39:791-792), Figure 1 inadvertently appeared twice, and Figure 3 was omitted. Figure 3 is printed here.

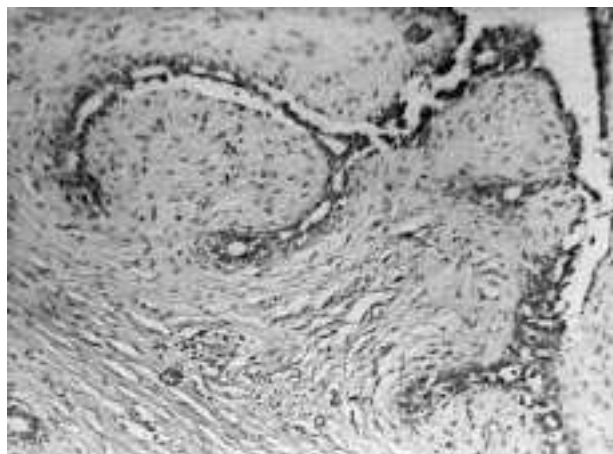


Figure 3
Photomicrograph showing ducts lined with benign epithelial cells and stromal cells along with collagen bands compressing the ducts (hematoxylin-eosin, $\times 320$).

In Stamatakos et al, "Diagnosis of Ameloblastoma of the Maxilla by Fine Needle Aspiration: A Case Report" (*Acta Cytologica* 1995;39:817-820), Figure 1 inadvertently appeared twice, and Figure 3 was omitted. Figure 3 is printed here.

In Blasco et al, "Solitary Angiomyolipoma of the Liver; Report of a Case with Diagnosis by Fine Needle Aspiration Biopsy" (*Acta Cytologica* 1995;39:813-816), Figure 1 inadvertently appeared twice, and Figure 2B was omitted. Figure 2B is printed here.

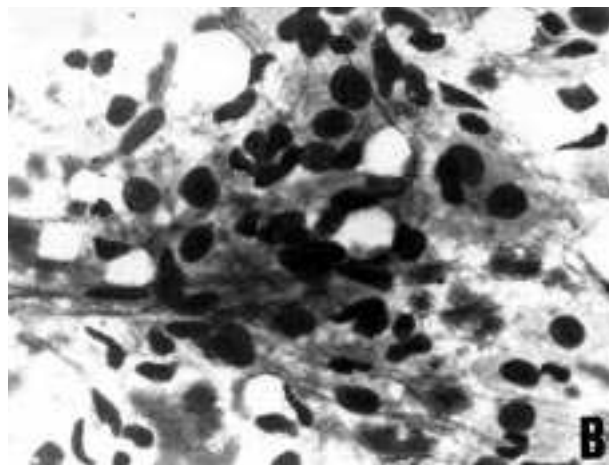


Figure 2
Aspirate cytology of hepatic angiomyolipoma. (A) Irregular bundles of smooth muscle cells containing several mature fat cells at the center. A thin, vascular structure is visible (arrow). (B) Higher magnification of a bundle of smooth muscle cells with fat cells seen in Figure 2A (Papanicolaou stain, A, $\times 100$; B, $\times 400$).



Figure 3
Cell block material from the aspirate showing numerous anastomosing cords of neoplastic epithelium (hematoxylin and eosin, $\times 500$).